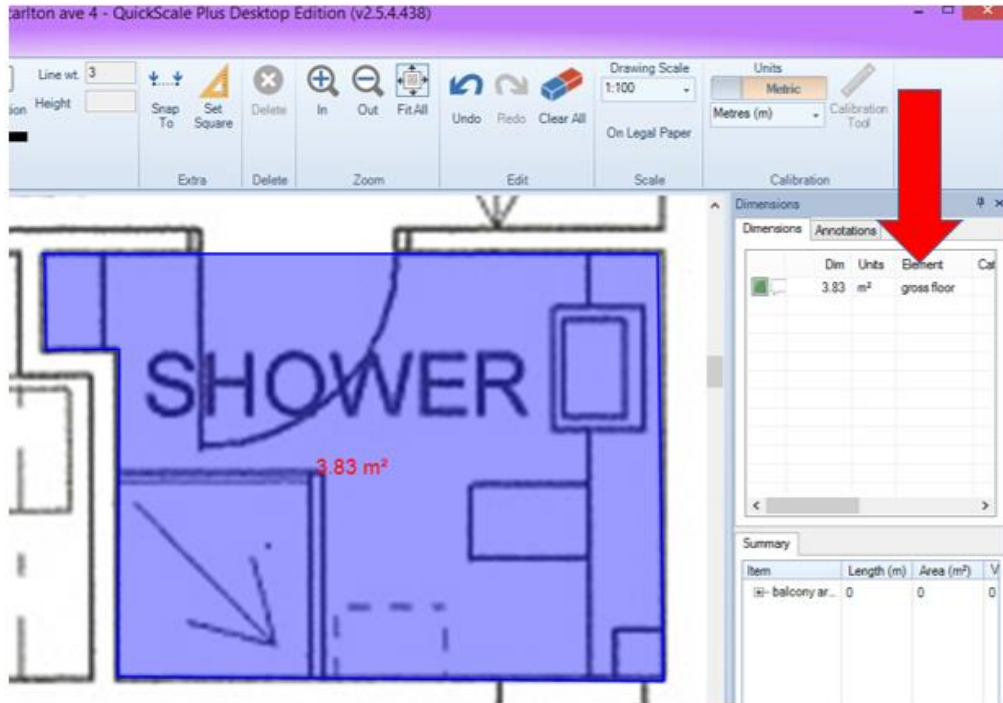


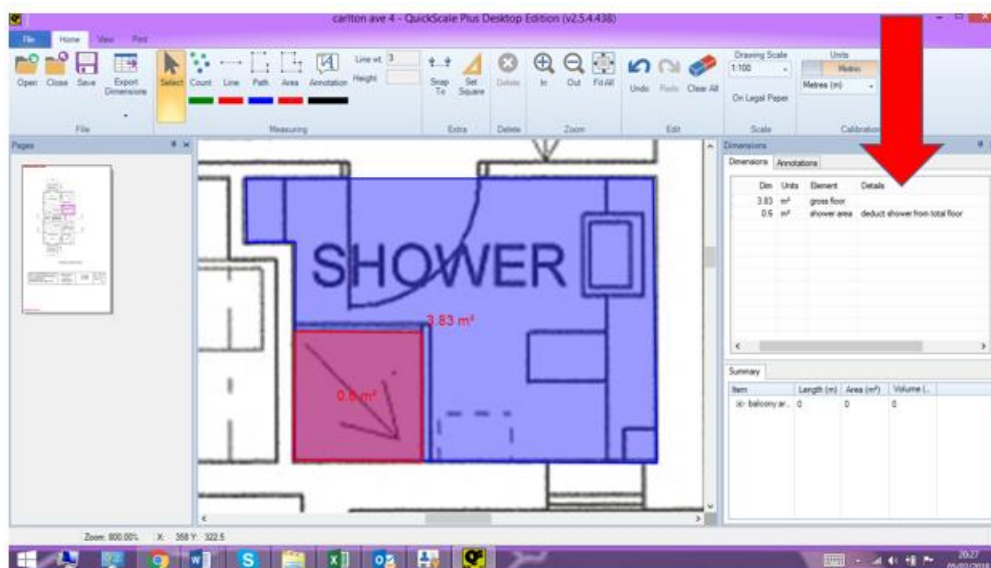
Deduct one area from another

Measure the total area. In the Dimensions pane, type over the word Area and give the measurement a name.

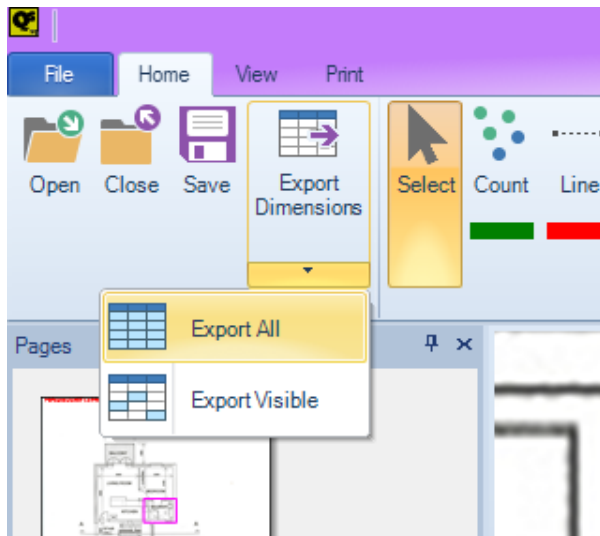


Measure the area to be deducted. Name the measurement.

In the Details column, type instructions of which measurement is to be deducted from which. You can widen the Dimensions pane by clicking and dragging the left hand edge.



Click Export Dimensions and save the new document.



The dims and notes will appear in a spreadsheet where you can deduct the areas.

	A	B	C	D	E	F	G	H	I
1	Category	Dim	Units	Height	Element	Details			
2		3.83	m ²		0 gross floor				
3		0.6	m ²		0 shower ar	deduct shower from total floor			
4									
5									

Kind regards

The QuickScale Team

sales@quickscale.co